

SOLENOID VALVE

XLA SERIES STEAM SOLENOID VALVE

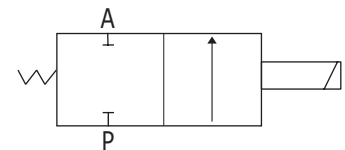


Features

1. Steam solenoid valve.
2. Pilot operated structure, Piston seal.
3. Lower power consumption, bigger working pressure
4. Body material: brass, stainless steel
5. VITON, PTFE seals are available
6. Normally closed and normally open

* Warning: Make sure the system is clean before installing please fix a filter in the front of solenoid valve for long life.

Symbol



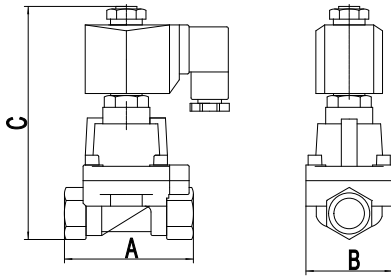
Specification for XLA Series Normally Closed Solenoid Valve

Model		Thread Size (G)	Orifice (mm)	CV	Working Pressure (Bar)								Seals	Voltage
					AC				DC					
Brass	Stainless steel				air, gas	water	Light oil	Steam	air, gas	water	Light oil	Steam		
XLA025-06	XLA025-06B	1/8"	2.5	0.23	0-16	0-16	0-13	0-10	0-16	0-16	0-13	0-10	PTFE SEAL ≤ 180°C Viton seals ≤ 150°C;	220VAC 110VAC 24VDC make Other voltage as requested
XLA025-08	XLA025-08B	1/4"	2.5	0.23	0-16	0-16	0-13	0-10	0-16	0-16	0-13	0-10		
XLA040-08	XLA040-08B	1/4"	4	0.6	0-7	0-7	0-4	0-7	0-4	0-4	0-4	0-4		
XLA150-10	XLA150-10B	3/8"	15	4.5	0.5-25	0.5-25	0.5-20	0.5-10	0.5-20	0.5-20	0.5-20	0.5-10		
XLA150-15	XLA150-15B	1/2"	15	4.5										
XLA200-20	XLA200-20B	3/4"	20	9										
XLA250-25	XLA250-25B	1"	25	13										
XLA350-35	XLA350-35B	1 1/4"	35	26										
XLA350-40	XLA350-40B	1 1/2"	35	26										
XLA500-50	XLA500-50B	2"	50	48										
Flange Connection	XLA250-25FB	4 holes flange	25	13										
	XLA350-35FB		35	26										
	XLA350-40FB		35	26										
	XLA500-50FB		45	45										

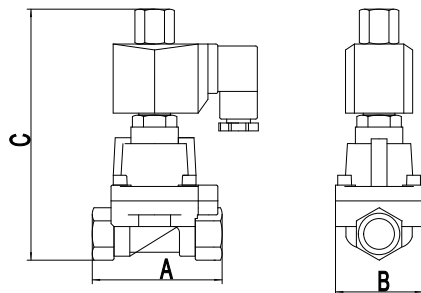
Specification for XLA Series Normally Open Solenoid Valve

Model		Thread Size (G)	Orifice (mm)	CV	Working Pressure (Bar)								Seals	Voltage
					AC				DC					
Brass	Stainless steel				air, gas	water	Light oil	Steam	air, gas	water	Light oil	Steam		
XLA150-10H	XLA150-10BH	3/8"	15	4.5	0.5-10	0.5-10	0.5-10	0.5-10	0.5-10	0.5-10	0.5-10	0.5-10	PTFE SEAL ≤ 180°C Viton seals ≤ 150°C;	220VAC 110VAC 24VDC make Other voltage as requested
XLA150-15H	XLA150-15BH	1/2"	15	4.5										
XLA200-20H	XLA200-20BH	3/4"	20	9										
XLA250-25H	XLA250-25BH	1"	25	13	0.5-6	0.5-6	0.5-6	0.5-6	0.5-6	0.5-6	0.5-6	0.5-6		
XLA350-35H	XLA350-35BH	1 1/4"	35	26										
XLA350-40H	XLA350-40BH	1 1/2"	35	26										
XLA500-50H	XLA500-50BH	2"	50	48	0.5-6	0.5-6	0.5-6	0.5-6	0.5-6	0.5-6	0.5-6	0.5-6		
Flange Connection	XLA250-25FBH	4 holes flange	25	13										
	XLA350-35FBH		35	26										
	XLA350-40FBH		35	26										

Overall Dimensions



Model No.	A	B	C	Model	A	B	C
XLA025-06	40	28	85	XLA025-06B	40	28	85
XLA025-08	40	28	85	XLA025-08B	40	28	85
XLA040-08	40	28	85	XLA040-08B	40	28	85
XLA150-10	75	52	129	XLA150-10B	75	52	129
XLA150-15	75	52	129	XLA150-15B	75	52	129
XLA200-20	85	60	141	XLA200-20B	85	60	141
XLA250-25	100	70	148	XLA250-25B	100	70	148
XLA350-35	120	90	168	XLA350-35B	120	90	168
XLA350-40	120	90	168	XLA350-40B	120	90	168
XLA500-50	150	110	190	XLA500-50B	150	110	190
XP500-50F	200	160	207	XLA250-25FB	134	110	185
				XLA350-35FB	160	135	200
				XLA350-40FB	160	145	205
				XLA500-50FB	200	155	250



Model No.	A	B	C	Model No.	A	B	C
XLA150-10H	75	52	147	XLA150-10BH	75	52	147
XLA150-15H	75	52	147	XLA150-15BH	75	52	147
XLA200-20H	85	60	159	XLA200-20BH	85	60	159
XLA250-25H	100	70	166	XLA250-25BH	100	70	166
XLA350-35H	120	90	186	XLA350-35BH	120	90	186
XLA350-40H	120	90	186	XLA350-40BH	120	90	186
				XLA250-25FBH	134	110	200
				XLA350-35FBH	160	135	215
				XLA350-40FBH	160	145	215